

Chinese Contemporary Art Uses and Reuses of the Past

Supplement to Education About Asia 17, no. 1 (2012): 39-43.

I. WESTERN BORROWINGS

Patricia Eichenbaum Karetzky



Michelangelo *The Last Judgment*
1534-41 Fresco Sistine Chapel,
Vatican, Rome



Miao Xiaochun b 1964
The Last Judgment, video 2005
(miaoxiaochun.com)



Miao Xiaochun *The Last Judgment*, video 2005

Hieronymus Bosch
The Garden of Earthly Delights,
c. 1410-15 Museo del Prado



Hieronymus Bosch, *The Garden of Earthly Delights*, c. 1410-15 Museo del Prado

Miao Xiaochun, *Fullness*,
video 2008



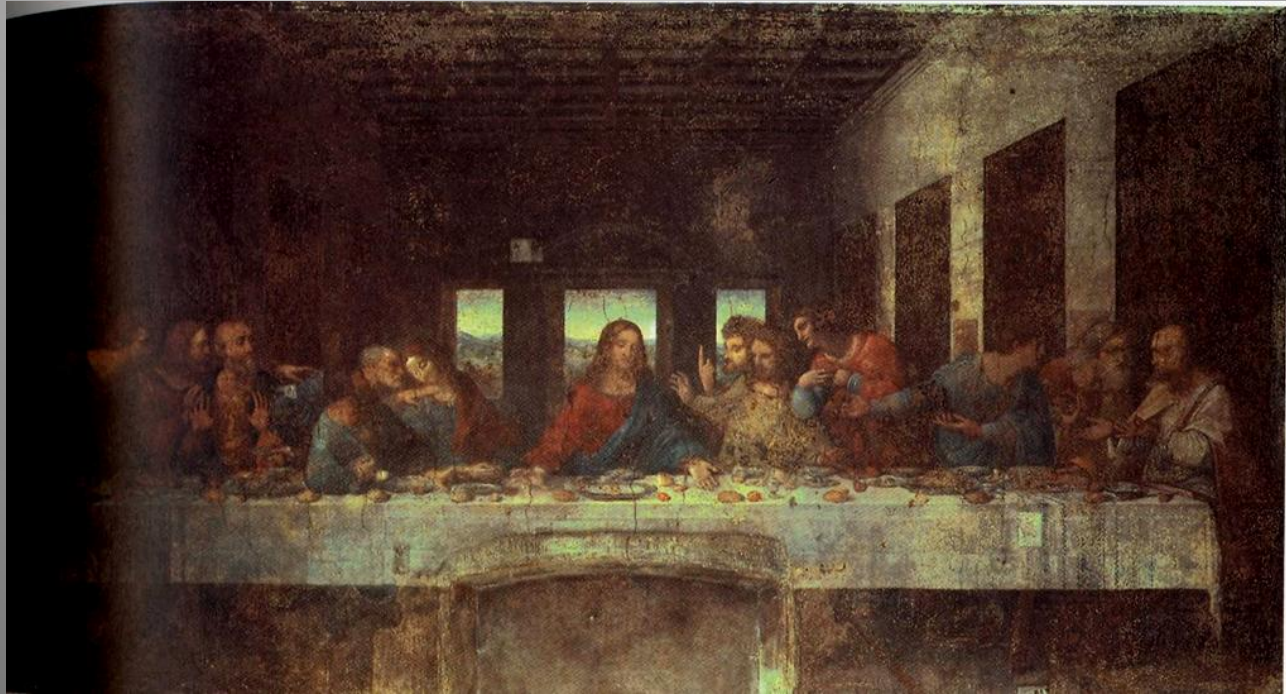
Hieronymous Bosch, *The Garden of Earthly Delights*, c. 1410-15 Museo del Prado



Miao Xiaochun, *Fullness*, video 2008



Leonardo da Vinci *The Last Supper*, c 1495-98 tempera mural
Sta Maria della Grazie, Milan



Cui Xiuwen *Sanjie* 2004 C print

(www.brooklynmuseum.org/eascaf/feminist_art_base/gallery/Cuixiuwen)

Jacopo Bellini (c. 1400 – c. 1470)
Virgin of Humility,
adored by a prince of the House of Este,
1440. Louvre Museum. 0.60 m. x .40 m.



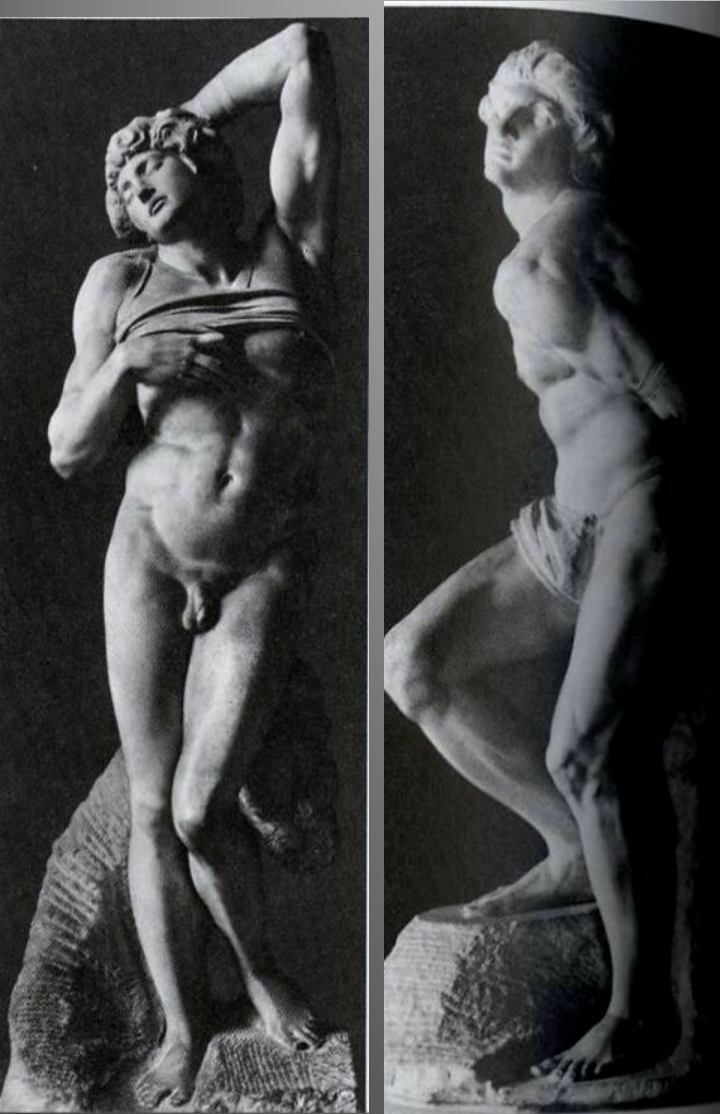
Gao Yuan,
Twelve Moons, 2008 C print 27.9 x
35.6 cm (gaoyuan-artist.com)



Year of the Rat 鼠

Michelangelo, *The Dying Slave* 1513-1516, *The Rebellious Slave* 1513-16,
Musée du Louvre, Paris

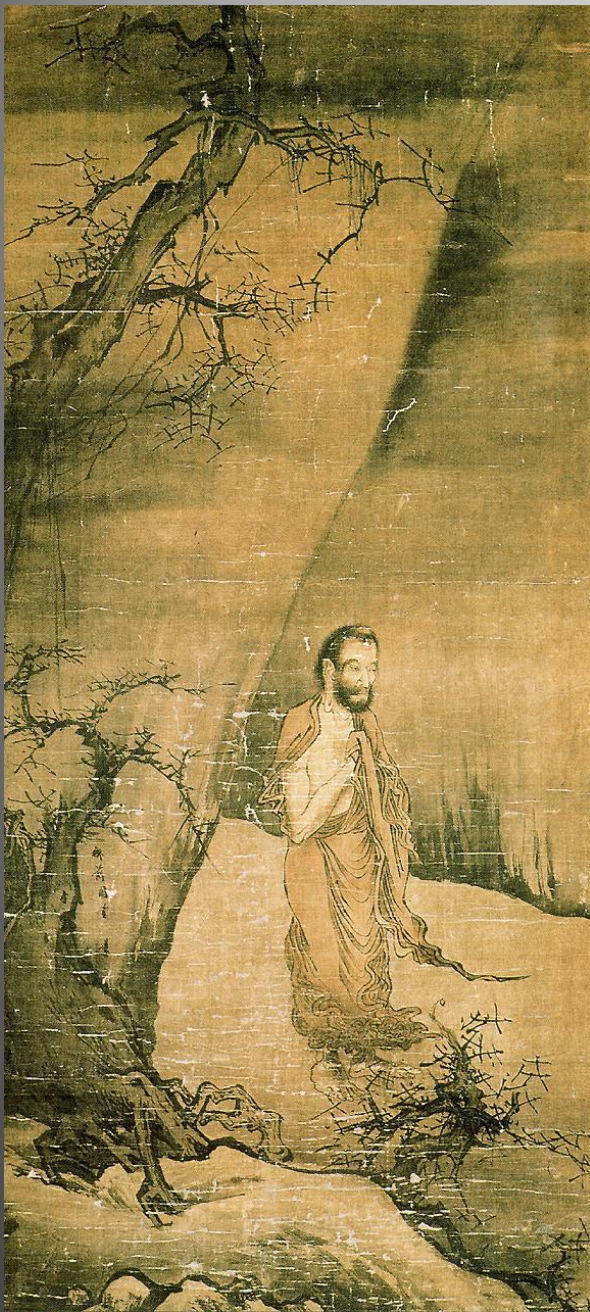
Sui Jianguo, b.1956 *Study on the Folding of Clothes*, 1998, Shanghai Biennale,
2002 (suijianguo.com)



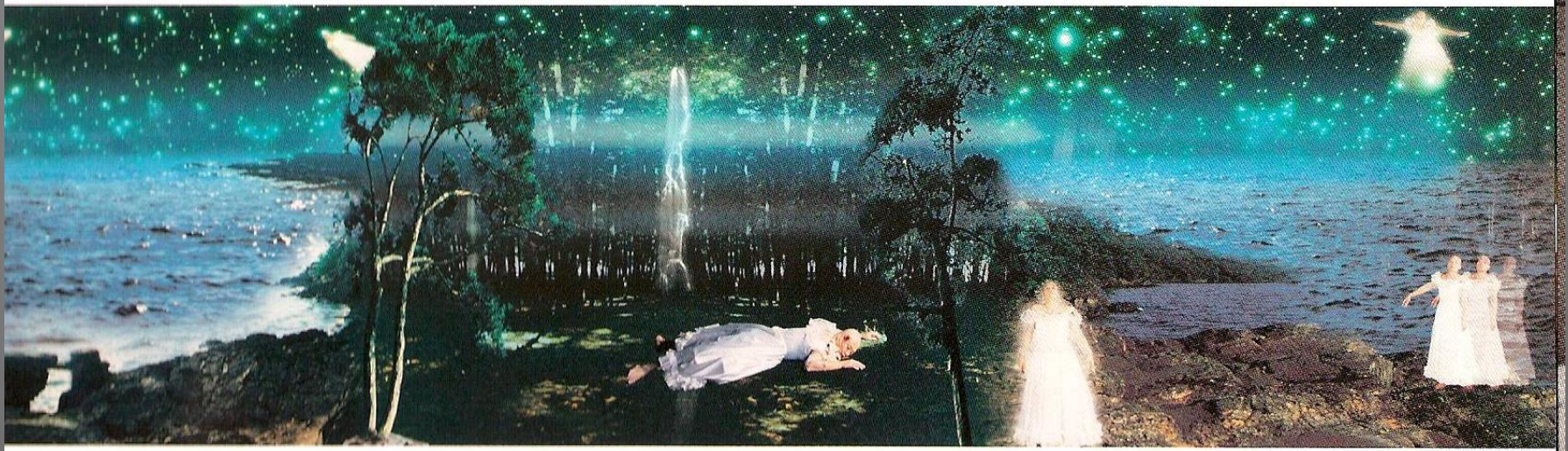
II CHINESE FIGURAL ART

Liang Kai, *Shakyamuni Coming Out of the Mts.*, ink on paper, 13th century Hanging scroll, ink and color on silk, 117.6 x 51.9 cm. Tokyo National Museum.

Hong Lei *Shakyamuni Coming Out of the Mts.* photo and installation at the Kwangju Biennale, Korea 2006
(www.artzinechina.com/display_vol_aid50_en.html)



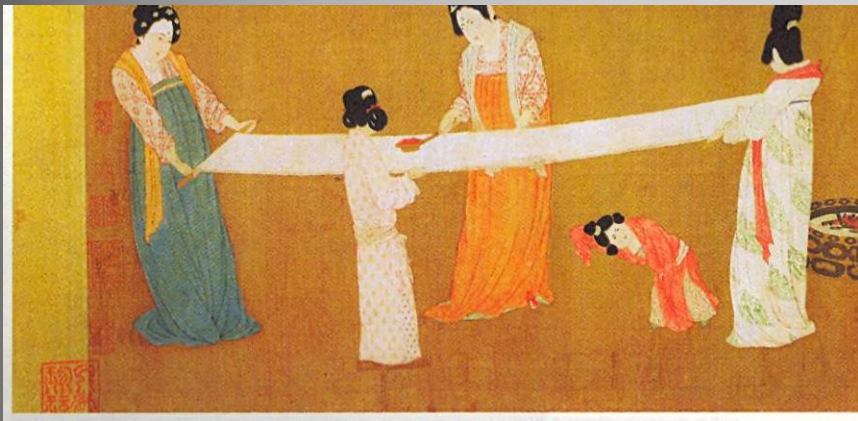
Hong Lei, *I Dreamt of Being Killed by My Father When I was Flying Over an Immortal Land* 2000 C-print 61 X 196.c cm



Land of the Immortals
attrib. Chen Ruyan,
Yuan dynasty
hand scroll, ink and
color on silk,
33 x 102.9 cm
Inscribed by Ni Zan
1371. Cleveland
Museum of Art

Hong Lei, *I Dreamt of Being Killed by My Father When I was Flying Over an Immortal Land* 2000 C-print 61 X 196.c cm





Zhang Xuan
Ladies Making Silk,
Tang dynasty eighth century, (later copy)
ink and colors on silk,
Boston Museum of Fine Arts

Zhu Wei, b 1966
Comrades, ink and color on paper, 1995



Gu Hongzhong attrib., *The Night Entertainment of Han Xizai*,
hand scroll detail ink and colors on silk, ca, 12th century copy, Palace Museum



Wang Qingsong b.1966
Night Revels of Lao Li, C
print
(www.wangqingsong.com)



Wang Qingsong, *Night Revels of Lao Li* C print

(www.wangqingsong.com)

Monument to the People's Heroes, Mao Memorial



Wang Qingsong b. 1966 Beijing

Past Present Future 2001 chromogenic prints 119.4 x 546.1 cm

Wangqingsong .com



Qi Zhilong (b. 1962) No # 21 2004 oil on canvas, 63.5 X 50.8 cm



Sichuan Academy of Fine Arts Co-op *The Rent Collector* 1965



Cai Guoqiang b 1957 Rent Collector Courtyard, installation Venice Biennale, 1999



III CHINESE LANDSCAPE TRADITIONS



Ni Zan Six Worthies 1345
Shanghai Museum ink on paper 61.9 x 33.3cm



Shen Zhou 1427-1509 *Landscape in the Manner of Ni Zan*
Nelson Atkins Museum of Art, Kansas City Missouri
ink on paper H - ca. 137.20 cm



Ni Zan Six Worthies 1345 Shanghai Museum ink on paper 61.9 x 33.3c m



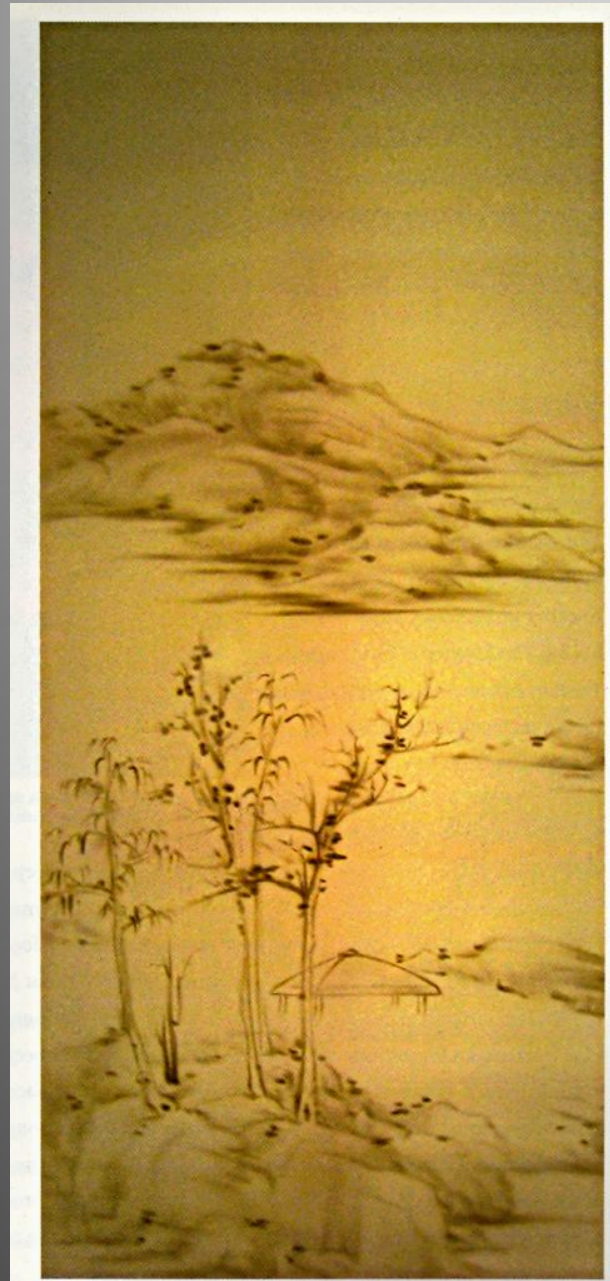
Dong Qichang (1555–1636)
Copy of Ni Zan
Taiwan Palace Museum ink on paper



Hong Ren 1610-1663.
The Coming of Autumn, ink on paper Honolulu Museum of Art



Ni Zan *Six Worthies* 1345
 Shanghai Museum ink on paper 61.9 x 33.3cm



Zhou Tiehai, b. 1966
Rongxi Studio, 2001 acrylic on
canvas, Cantor Center for Visual
Arts Stanford University,
produced by an artisan at the
request of the artist



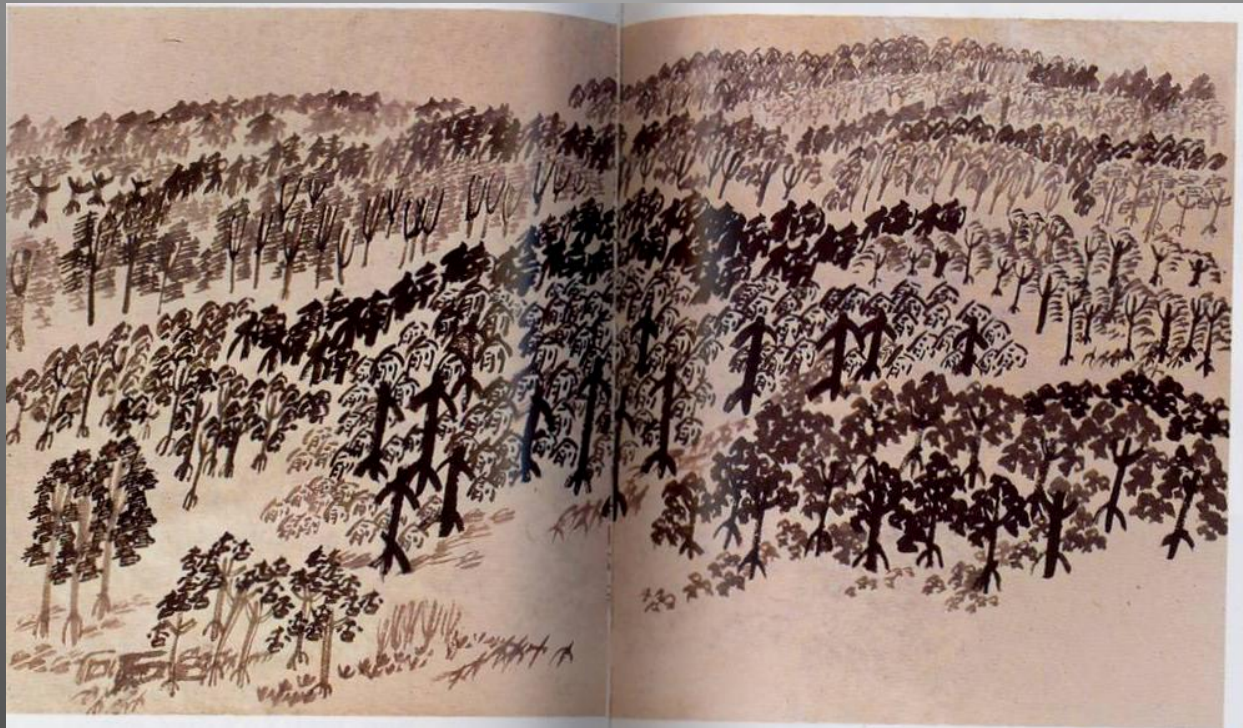
Wenda Gu (b. 1955) *Pseudo Characters Series: Contemplation*, ink on paper, one of three hanging scrolls, each 489 x 274 cm (wendagu.com)



Gong Xian (1617-1689) *Thousand Peaks and Myriad Ravines*, hanging scroll, 61 x 101.6 cm Reitberg Museum Zurich

Xu Bing , (b. 1955) *Landscrypt: Ten Thousand Trees*, 2001

竹
海
松
林
世
歲
金
茂



Huang Yan b.1966 *Chinese Landscape Tattoo* 1999

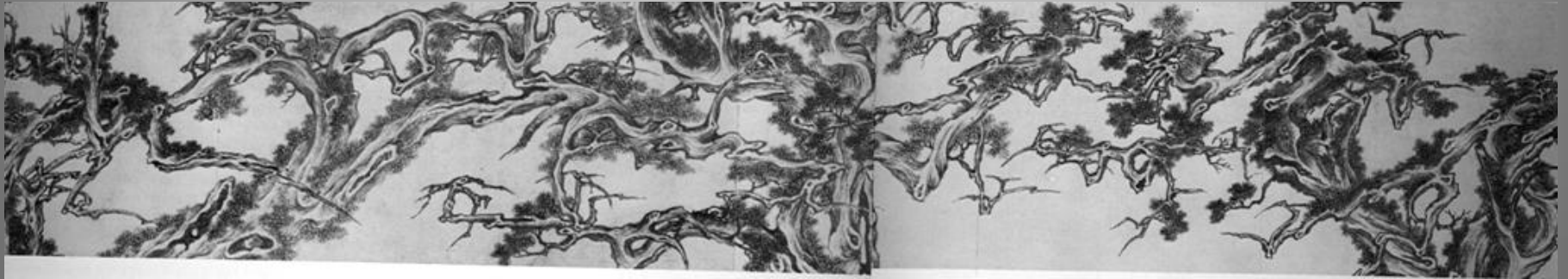
chromogenic print 78 .7 x 106 cm

Wang Yuanqi, *Wangchuan Villa* dated 1711

Metropolitan Museum of Art, inv. no. 1977.80 ink and colors on paper



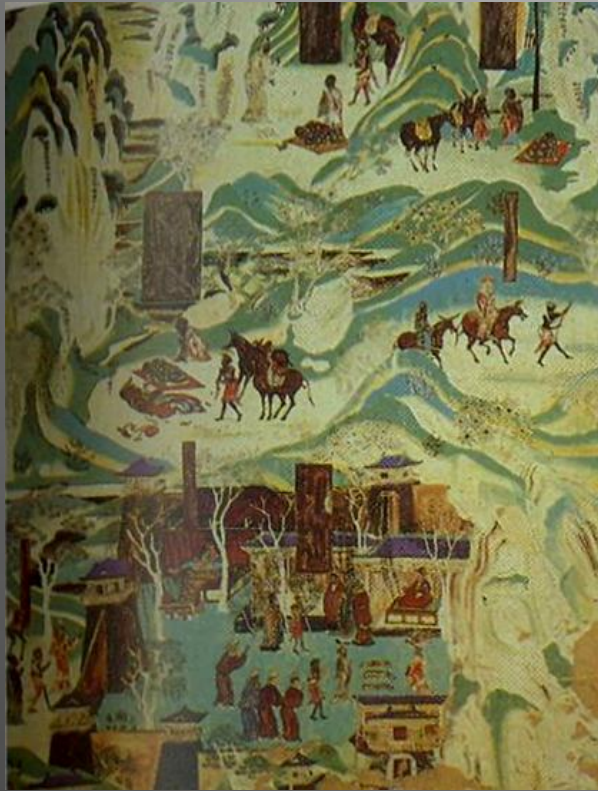
Wen Zhengming, *Seven Junipers*, 1532, Honolulu Academy of Arts
ink on paper



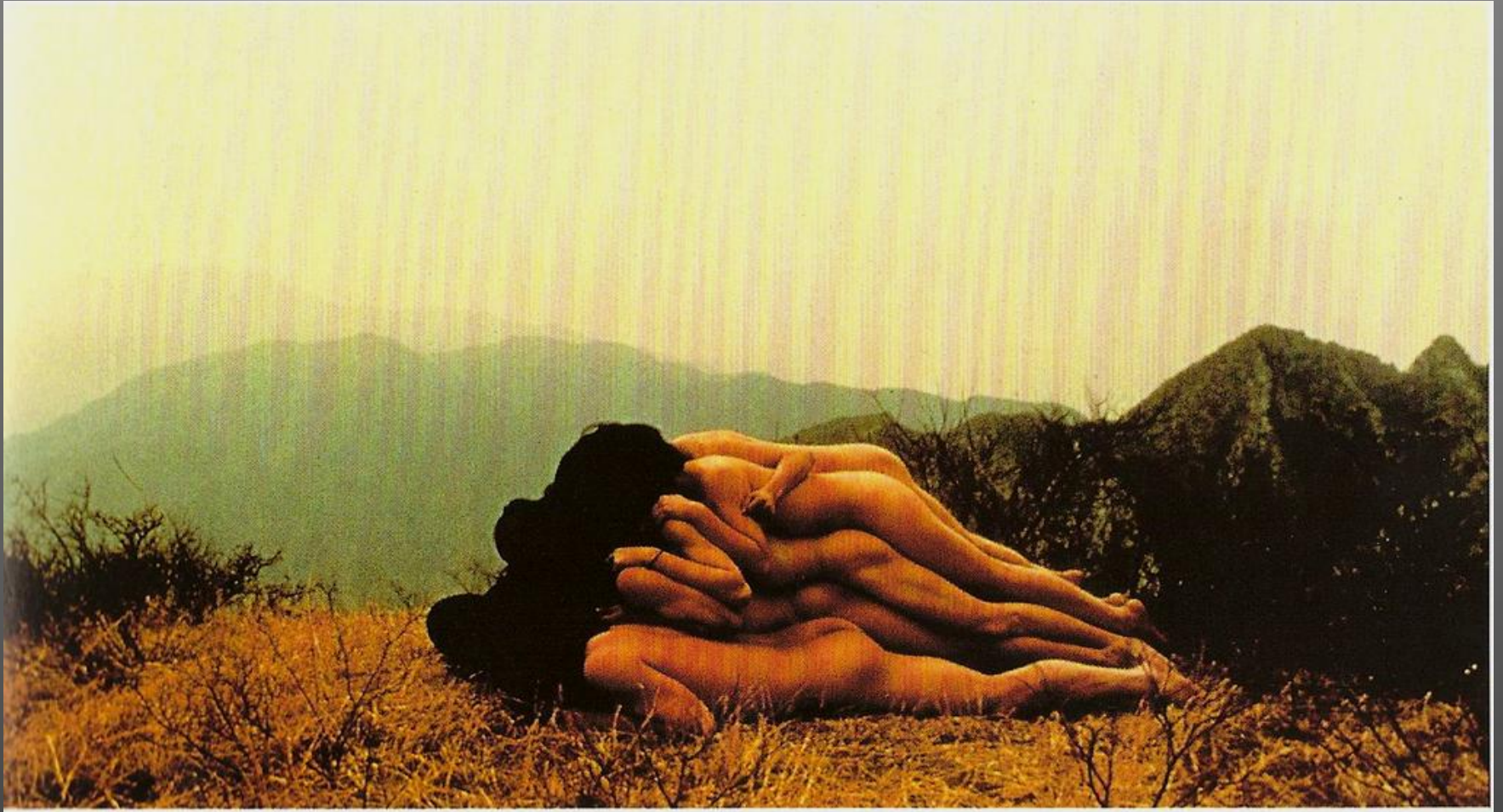
Cui Xiu Wen *Existential Emptiness* 2009 c print

Anon. *Pilgrims and Travelers in a Landscape*
Cave 217, Dunhuang, Gansu, Tang dynasty eighth century

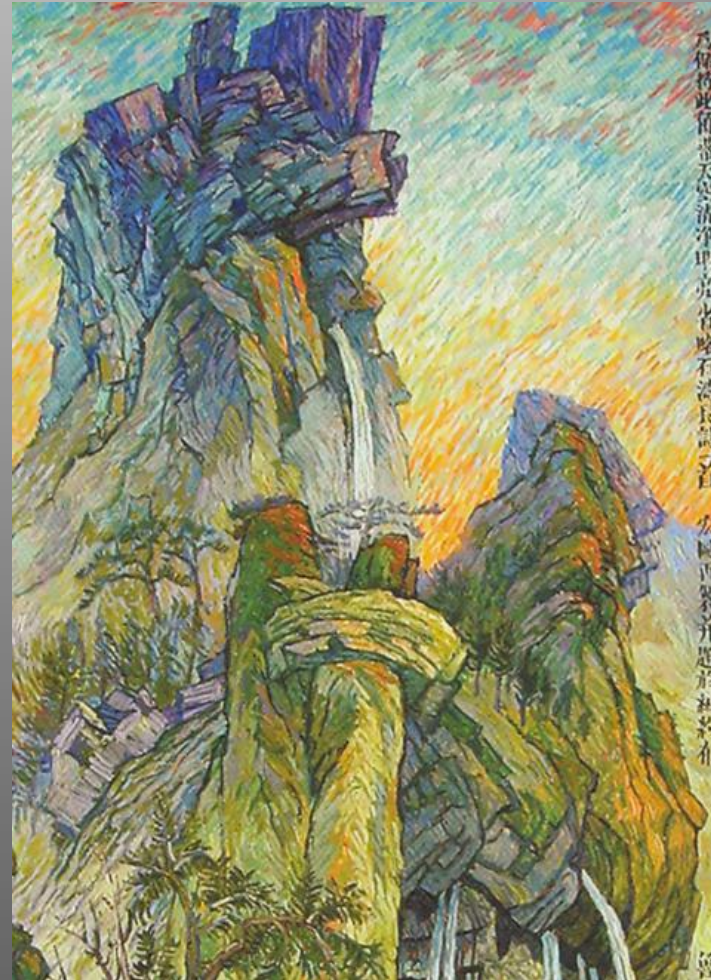
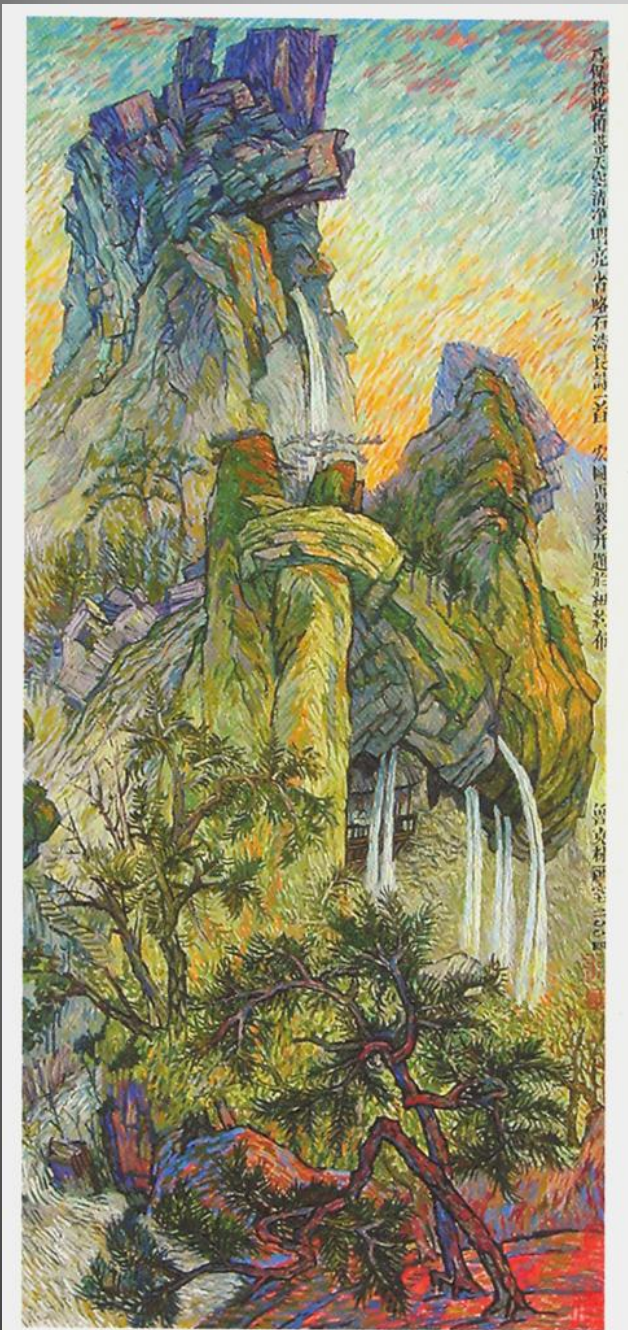
Yang Jinsong,, *Tang Mountain Landscape* oil on canvas 2003
(yangjinsong.com)



Zhang Huan (b. 1965) To add one meter to a Unknown Mountain
Performance at Miaofeng Mountain, Beijing, May 1995
(www.zhanghuan.com)



Zhang Hongtu, (b. 1943)
Wang Shen-Monet 1999 artist's signature and seals
added in 2002 oil on canvas, Cantor Center for
Visual Arts, Stanford University (www.moma.com)



Wei Dong (b. 1968) *The New –Comrade* 1996
acrylic on paper 63.5 x 132.1cm.



Huang Binhong 1865-1955
Landscape with Small Bridge, Prague
(arts.cultural-china.com/en/77Arts4568.html)



IV. GARDEN ROCKS



Lingbi limestone,
37 .5 x 36 x 35 cm
Huangli wood stand
Spirit stones of China,
Ian and Susan Wilson
Collection of Chinese
Stone Art Institute of
China

Wen Zhengming *Cypress and Rock* 1159, ink on paper 48.3 x 25.4 cm Nelson
Atkins Museum of Art inv. no William Rockhill Nelson Trust, 46-48

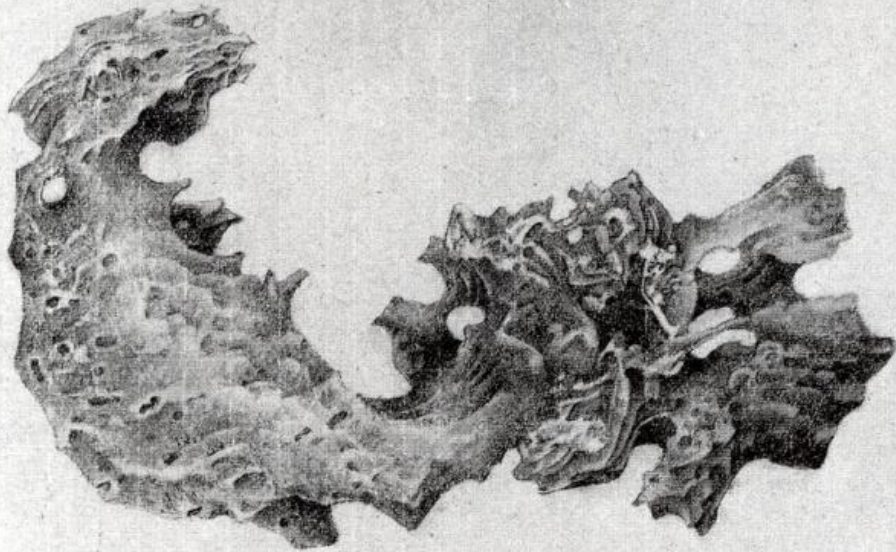




Hong Lei
Taihu Rock
2006 digital print

Liu Dan, b. 1953,
Tai Hu Stone, 1995
Hanging scroll on paper

銷落復崔嵬蒼然玉一堆峯駢仙掌
 出鱗砦劒門開峭頂高危矣根盤下
 壯哉精神欺竹樹氣色壓亭臺隱起
 嶠一狀凝成瑟一胚廉稜露鋒刃清越
 叩瓊瑰岌業形將動巍峩勢欲摧奇
 應慚鬼怪靈合蓄雲雷黛潤露新雨
 斑明點古苔亦曾棲鳥雀不肯染塵
 埃尖削琅玕筍窳剗瑪瑙疊海神移碼
 石畫幃簇天台在世為尤物如人負逸才
 渡江一葦載入洛五丁摧出處雖無意升
 沉亦有媒拔從水府底置向相庭隈對
 緝吟詩句看宜把酒杯終隨金礪用不
 學玉山頽疎傳心偏愛園公眼屢迴共嘆
 無此分虛管太湖來和惠題以奉蘇州寄太湖石
 高扶鶴歸題詩前後二十韻
 方氏莊太湖石鱗次重複巧出天然晉
 卿曾畫烟江疊嶂圖東坡作詩咏之
 借以名之詩曰太湖嵌空藏洞宮槎牙石
 角生淪中濤波投隙漱且噉歲久缺
 罅深重水空發敲夜鐘銘中有晴江
 烟障叠誰歟斷取來何時山客自言藏
 奕葉江上愁心惟畫圖蘇仙作詩畫一
 不如當年此石若並世雪浪仇池何足
 書我無後語對巨麗欲定等差誰與
 議直須具眼老香山來為平章作新
 記蘇東坡咏方氏莊太湖石此莫公士撫先生所贈天籟
 石數年于面取姿蘇高閣記畫猶未畫也
 庚午秋月金陵劉汁詩題



Zhan Wang, (b.1962) Rocks, mixed media
(www.zhanwangart.com)



展望 ZHAN WANG

Sui Jianguo, b. 1956 *River Rock*, Structure Series 1984, 80 cm long, and 1990 c. 122 cm tall (suijianguo.com)

